

Uppgjord (även faktaansvarig om annan) - Prepared (also subject responsible if other)		Nr - No.	
Optea AB, Bingfeng Zhu		55-DM2-00003-01	
Dokansv/Godk - Doc respons/Approved		Datum - Date	Rev
Esteban Arboix		2010-09-23	01
			File

# Optea Mobile Phone - BlueTooth - Remote Control Application MP-BT-RC™

## User Guide

### 1 Purpose

The purpose of this document is to help the user to set up the Veo+ demonstration unit as well as to guide the user on how to use the Optea Bluetooth Remote Control prototype application.

### 2 Content of the Demonstration Box

#### 1. Optea Veo+ Demonstration Unit



Uppgjord (även faktaansvarig om annan) - Prepared (also subject responsible if other) Optea AB, Bingfeng Zhu	Nr - No. 55-DM2-00003-01		
Dokansv/Godk - Doc respons/Approved Esteban Arboix	Datum - Date 2010-09-23	Rev 01	File

## 2. Veo+ Power Cable



## 3. Veo+ Data Cable



## 4. Projection Screens



# 3 Setting Up the Veo+ Projector

## 3.1 Connecting the Cables

1. Connect Data cable to Projector
2. Connect VGA interface of data cable to PC or laptop
3. Connect the projector to ground or by using the crocodile clip
4. Connect power cable to Projector

Uppgjord (även faktaansvarig om annan) - Prepared (also subject responsible if other) Optea AB, Bingfeng Zhu	Nr - No. 55-DM2-00003-01		
Dokansv/Godk - Doc respons/Approved Esteban Arboix	Datum - Date 2010-09-23	Rev 01	File

### 3.2 Powering Up


1. Connect the **V++** to a 12V source. For optimum performance, use a 12V source with output current of 9A to obtain an approximately 100W of input power.
2. Wait for 5 seconds to allow the projector to initialize. The projector is now in standby mode and the user can use the Optea Bluetooth Remote Control application to wake the projector up. Before doing so, the user has to establish a Bluetooth connection between the mobile phone and the projector.

## 4 Using Optea Bluetooth Remote Control Application

### 4.1. Requirement and Installing


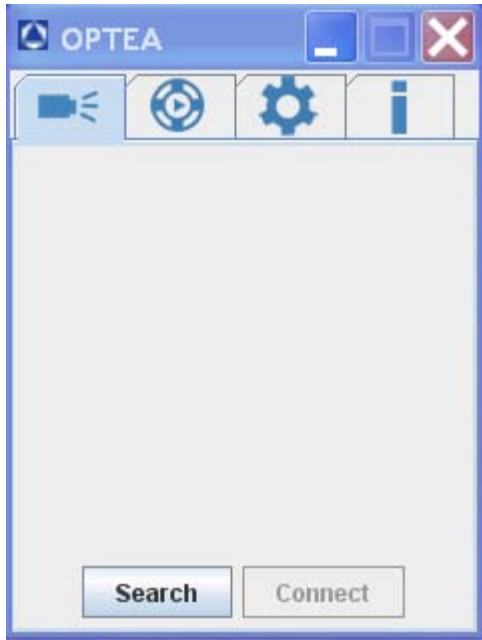
This application is intended to be used to control the on-screen display (OSD) menu of the Veo+ projector hence allowing the user to modify the settings of the projector. You can find the application on <http://www.optea.com/projects.asp> or the CD accessory and install the application on your mobile phone. In order to successfully execute the prototype application, few measures should be taken:

- Make sure the projector is powered on.
- Make sure the Bluetooth radio of the mobile phone is switched on.
- The projector is within discoverable range from the mobile phone (<5m).

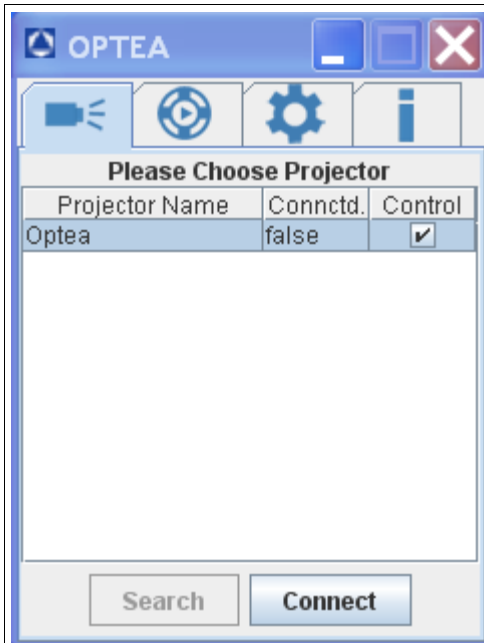
In order to run the application, the mobile phone with Bluetooth (support JSR-82) and java run environment. Save the files OpteaCtrl.jar and OpteaCtrl.jad to your SD/MMC card of your mobile phone or your mobile phone memory. You will find the application with the logo  , just click and run it.

Uppgjord (även faktaansvarig om annan) - Prepared (also subject responsible if other) Optea AB, Bingfeng Zhu		Nr - No. 55-DM2-00003-01	
Dokansv/Godk - Doc respons/Approved Esteban Arboix	Datum - Date 2010-09-23	Rev 01	File

## 4.2 Running the Application and Operating the Unit(s)

 <p>The splash screen displays the OPTEA logo (a blue hexagon with a white triangle and a Bluetooth symbol) at the top. Below the logo, the text reads "OPTEA Remote Control v.2.0".</p>	<p><b>Step 0: start up</b></p> <ul style="list-style-type: none"> <li>When the application loads, a Splash Screen will be displayed and then followed by the main menu screen.</li> </ul>
 <p>The main menu screen shows a window titled "OPTEA" with a standard Windows-style title bar. Below the title bar is a toolbar with four icons: a projector, a play button, a gear, and an information icon. The main area of the window is mostly blank. At the bottom, there are two buttons labeled "Search" and "Connect".</p>	<p><b>Step 1: search devices</b></p> <ul style="list-style-type: none"> <li>Click Search to search for Bluetooth projector. The application will search for available Bluetooth devices around the neighborhood and will display the discovered devices on the Select Device Screen.</li> </ul> <p><i>The device discovery process may take some time, therefore users are advised to wait until the Bluetooth process icon on the top of the screen to indicate that the Bluetooth process has ended</i></p>

Uppgjord (även faktaansvarig om annan) - Prepared (also subject responsible if other) Optea AB, Bingfeng Zhu	Nr - No. 55-DM2-00003-01		
Dokansv/Godk - Doc respons/Approved Esteban Arboix	Datum - Date 2010-09-23	Rev 01	File



### Step 2: establishing connection

- Select Connect. User will be asked to authorize the connection.
- The default password is 1234.
- The conntd. status will be true.

*On the Main Menu Screen, there probably be several projectors, you can choose one of them or several at the same time. the password only needed fist time connection is established*



### Step 3: powering up

- go to the  menu and click  button to turn on the projector

Uppgjord (även faktaansvarig om annan) - Prepared (also subject responsible if other)		Nr - No.	
Optea AB, Bingfeng Zhu		55-DM2-00003-01	
Dokansv/Godk - Doc respons/Approved		Datum - Date	Rev
Esterban Arboix		2010-09-23	01
		File	



**Step 4: selection source**

It is ready to send control signals to the projector.

- The default setting is get data from local hardware, instead of VGA, but you can choose VGA as well, when is selected, the button become red.
- You can choose different buttons to control the menu of the projector screen



Mobile phone Keyboard maps to the button:

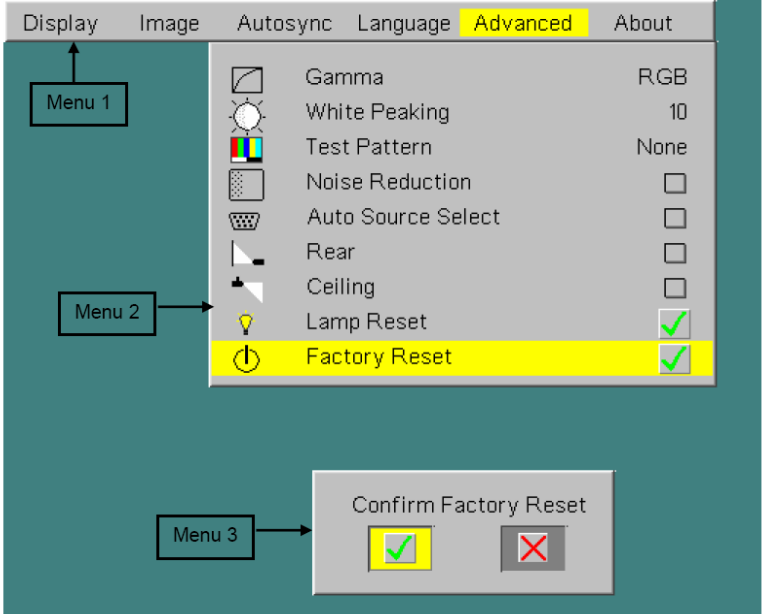
1 ->		2->		3 ->	
4 ->		5 ->		6 ->	
		8 ->			
* ->					

Uppgjord (även faktaansvarig om annan) - Prepared (also subject responsible if other) Optea AB, Bingfeng Zhu	Nr - No. 55-DM2-00003-01
Dokansv/Godk - Doc respons/Approved Esteban Arboix	Datum - Date 2010-09-23
	Rev 01
	File



### Step 5: media player control


- ⏮ the previous image or video
- ⏭ the next image or video
- go to right menu
- ⏴ go down of the menu
- ⏪ go to left menu
- ⏵ go up of the menu
- ⏴ choose the menu
- 🏠 go home menu
- stop play
- ⏸ pause/play




### Step 6: controlling the OSD menu

1. Please allow the OSD menu application to initialize before sending signals from the remote control application. The initialization process is successful once all the pop-up messages on the OSD disappear.
2. Press ENTER on the keypad of the mobile phone to display the OSD menu.
3. Then the user may use the other keys shown by the following diagram on the next page for further actions on the OSD menu of the projector.
4. The OSD menu will disappear automatically if there is no activity within 20 seconds.

Uppgjord (även faktaansvarig om annan) - Prepared (also subject responsible if other) Optea AB, Bingfeng Zhu	Nr - No. 55-DM2-00003-01		
Dokansv/Godk - Doc respons/Approved Esteban Arboix	Datum - Date 2010-09-23	Rev 01	File



**Step 7: power off**

- On the Remote Control Screen, click  button to Quit.

## 5 Support

There are still some issues and bugs to be solved for this prototype application. Feel free to contact Optea AB for further questions. We are also happy to hear your suggestions to improve this application.

Thank you.

Optea AB  
Björnnäsvägen 21  
113 47 Stockholm  
Sweden

Phone : +46 (0)8 519 70 800  
Email : info@optea.com  
Website : www.optea.com